



# CHS Patch Program

# Pet Pals

CThumane.org





Dear Girl Scout and Boy Scout leaders,

Thank you for your interest in the Connecticut Humane Society's Patch Program! Guided by our mission to prevent animal cruelty, CHS is proud to partner with you to inspire empathy, responsibility, and compassion in the next generation; empowering the children we serve to grow into kind, conscientious stewards of both pets and their communities. This program offers three different patch opportunities for youth in grades K-12. There are three components to each patch: *Discovery*, *Service for Pets*, and *Connecting with the Connecticut Humane Society*. Most of the activities can be completed at your group meetings. To complete the *Connecting with the Connecticut Humane Society* component please contact our Community Outreach Team at [Outreach@cthumane.org](mailto:Outreach@cthumane.org). After the program or tour, you will be able to purchase the Pet Pals patch for each member of your group. In this packet you will find a detailed description of the patch requirements. Please read through the packet; if you have any questions about the process do not hesitate to contact us at the email above. Thank you again for your interest in the Patch Program for Girl Scouts and Boy Scouts! We look forward to working with you.

Sincerely,

Ashley Holm, Hannah Mirlis, and Zoe Picanso

Connecticut Humane Society Community Outreach Team



## Pet Pals Program Description

Each member who would like to achieve this patch should complete and participate in all of the activities outlined below. This program operates on good faith. This means we do not require proof that each member has completed their requirements, instead we trust that leaders will do so.

Recommended Grade Level: K – 3rd Grade

Fees: Leaders will select either a tour or interactive program for their group.

- An interactive program for up to 30 children is \$50.
- A tour for up to 15 people is \$50 per group.
- Patches- \$5 each (available for optional purchase)

## Patch Design:



CThumane.org





Complete the following activities as a group.

1. Discuss what pets each child has at home. What do their pets need to be happy and healthy? How do they help take care of their pet? Discuss how some pets' needs are different from those of other pets. Why might this be?
2. Color the “Dog Safety” coloring sheet to learn about safely interacting with dogs.
3. Complete the “What Pets Need” matching activity to discover what different kinds of pets need for proper care.
4. Draw your favorite pet and tell us why you love them in the “Draw Your Favorite Pet” activity.

### **Service for Pets**

As a group please participate in a service activity for the pets at the Connecticut Humane Society. All donations may be dropped off at the Newington, Waterford or Wilton location. Wish lists can be found at [CThumane.org/wishlist](https://CThumane.org/wishlist). Below are a few suggestions to help get your group started.

- Organize a pet food drive for the Connecticut Humane Society Pet Food Pantry.
- Design an online collection drive using the CHS Amazon Wish list.
- Craft approved hand-made items for the pets. A list of safe DIY crafts can be located here: [CThumane.org/craft](https://CThumane.org/craft).





## Connecting with the Connecticut Humane Society

Once you have completed all of the other requirements, there are two options for completing the patch (*please choose one*):

1. Schedule a time for a Connecticut Humane Society educator to visit and lead an interactive program for your group. Programs run Monday-Friday between 7am-7pm. These programs are capped at 30 participants, if your group has more members please contact [Outreach@cthumane.org](mailto:Outreach@cthumane.org).

### Program Options:

- PaCK- Pets and Caring Kids: Pets are a ton of fun, but they can be a lot of work! Explore what different types of pets need to be happy and healthy and how these needs compare with our own.
- The Safety PAWtrol: This program will teach participants about dog body language and how to safely interact with dogs.
- Kind Kids: Explore the importance of being kind and compassionate towards pets and people.

Each program has a fee of \$50.

2. Book a behind-the-scenes tour at a Connecticut Humane Society location of your choosing: Newington, Waterford or Wilton. Tours run Monday-Friday between 11am-4pm. Tours can accommodate up to 15 people. If your group has more members please contact [Outreach@cthumane.org](mailto:Outreach@cthumane.org).

A tour is available for a \$50 fee.

[CThumane.org](http://CThumane.org)





# 3 Steps to Safely Greet a Dog

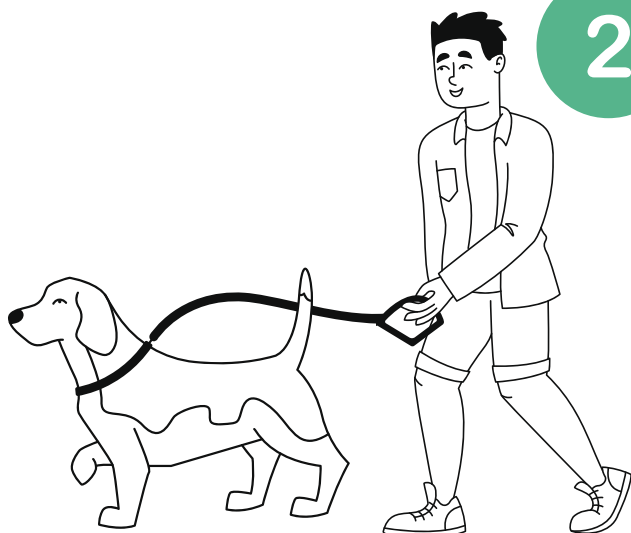
1

Ask the owner's permission before petting.



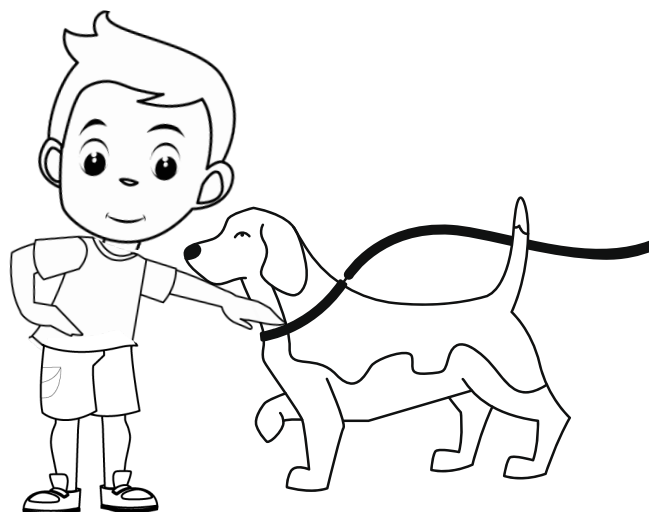
2

Invite the dog into your space. When the dog approaches keep your hand close to your body and allow the dog to sniff your hand.



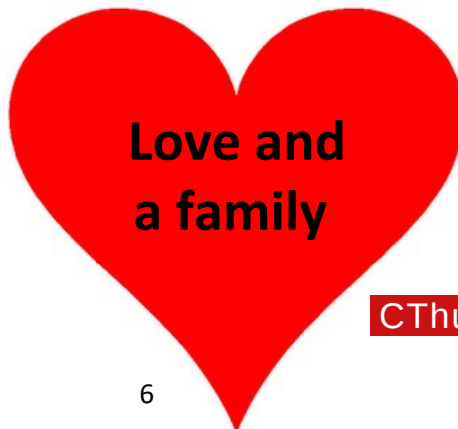
3

Step to the side and pet the dog gently on the side of their neck or their back.



# What Pets Need

**Directions:** Match each item to the pet that needs it to be happy and healthy. Some pets need multiple items.



CThumane.org



# What Pets Need

## Leader Guide

**Instructions:** For this activity, leaders should allow 10-15 minutes for the group to complete the worksheet. After the worksheet is completed, go over the answers with the group. Then ask some follow up questions. Examples of questions and answers are included below. You may use these questions or develop your own.

### 1. Why does the dog need a collar and a leash?

Collars are important for identifying a dog if he or she gets lost. Collars have special rings that tags hang on. These tags contain information about the pet and their owners, which can help the dog find his way home. Leashes are important for keeping dogs safe outside. Leashes prevent dogs from running away, running into the road, or running up to other animals that may be dangerous to them.

### 2. What would a hamster use the wheel for?

Hamsters use the wheel for exercise. Hamsters need to run to stay happy and healthy. Ensuring they have a wheel is an important part of being their owner.

### 3. Why does a cat need a litter box?

Cats go to the bathroom in a litter box. It is important to clean your cat's litterbox daily. Having a clean litter box keeps your cat happy and prevents the house from getting smelly.

### 4. What does the bird use the cage for?

This is the birds' home. Birds who live in houses need cages so they cannot fly around the home and get hurt or lost.

**Follow up question:** What in a house could hurt a bird?

Other pets, like cats, open windows that birds can escape from, ceiling fans, etc.

### 5. Do rabbits eat the hay or use it for bedding?

Rabbits use hay for both! It is important for rabbits to have hay in their diet for proper digestion, but they also enjoy spreading it out to make a comfy spot to sleep.

CThumane.org





# Draw Your Favorite Pet!

Make a drawing of your favorite pet in this picture frame.



My favorite pet's name is: \_\_\_\_\_

I love this pet because \_\_\_\_\_

\_\_\_\_\_

\_\_\_\_\_

\_\_\_\_\_

## Coloring Page



CThumane.org

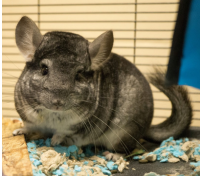
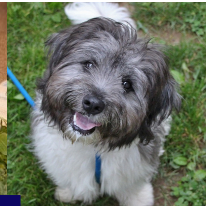
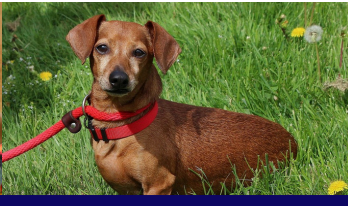


# What Pets Need

## Answer Key







**The Connecticut Humane Society is the leading resource in the state for companion animal welfare, enriching the lives of families and communities through adoption services, medical care, education, and prevention of cruelty.**

**Newington • Waterford • Wilton**

**1-800-452-0114 • CThumane.org**

