



CHS Patch Program

Furry Friends

CThumane.org





Dear Girl Scout and Boy Scout leaders,

Thank you for your interest in the Connecticut Humane Society's Patch Program! Guided by our mission to prevent animal cruelty, CHS is proud to partner with you to inspire empathy, responsibility, and compassion in the next generation; empowering the children we serve to grow into kind, conscientious stewards of both pets and their communities. This program offers three different patch opportunities for youth in grades K-12. There are three components to each patch: *Discovery*, *Service for Pets*, and *Connecting with the Connecticut Humane Society*. Most of the activities can be completed at your group meetings. To complete the *Connecting with the Connecticut Humane Society* component please contact our Community Outreach Team at Outreach@cthumane.org. After the program or tour, you will be able to purchase the Furry Friends patch for each member of your group. In this packet you will find a detailed description of the patch requirements. Please read through the packet; if you have any questions about the process do not hesitate to contact us at the email above. Thank you again for your interest in the Patch Program for Girl Scouts and Boy Scouts! We look forward to working with you.

Sincerely,

Ashley Holm, Hannah Mirlis, and Zoe Picanso

Connecticut Humane Society Community Outreach Team

CThumane.org



Furry Friends Description

Each member who would like to achieve this patch should complete and participate in all of the activities outlined below. This program operates on good faith. This means we do not require proof that each member has completed their requirements, instead we trust that leaders will do so.

Recommended Grade Level: 2nd - 5th Grade

Fees: Leaders will select either a tour or interactive program for their group.

- An interactive program for up to 30 children is \$50.
- A tour for up to 15 people is \$50 per group.
- Patches- \$5 each (available for optional purchase)

Patch Design:



CThumane.org





Complete the following activities as a group.

1. Discuss what pets each child has at home. What do their pets need to be happy and healthy? How do they help take care of their pet?
2. Complete the “Pet Care” crossword.
3. Discover how pets communicate with people and each other by completing the “Pet Behavior” activity.
4. Participate in the “Pet Interaction” activity to expand your understanding of how to safely greet and interact with dogs.



As a group please participate in a service activity for the pets at the Connecticut Humane Society. All donations may be dropped off at the Newington, Waterford or Wilton location. Wish lists can be found at CThumane.org/wishlist. Below are a few suggestions to help get your group started.

- Organize a pet food drive for the Connecticut Humane Society Pet Food Pantry.
- Design an online collection drive using the CHS Amazon Wish list.
- Craft approved hand-made items for the pets. A list of safe DIY crafts can be located here: CThumane.org/craft.



Connecting with the Connecticut Humane Society

Once you have completed all of the other requirements, there are two options for completing the patch (*please choose one*):

1. Schedule a time for a Connecticut Humane Society educator to visit and lead an interactive program for your group. Programs run Monday-Friday between 7am-7pm. These programs are capped at 30 participants, if your group has more members please contact Outreach@cthumane.org.

Program Options:

- The Safety PAWtrol: This program will teach participants about dog body language and how to safely interact with dogs.
- Kind Kids: Explore the importance of being kind and compassionate towards pets and people.
- Pet Care 101: Learn the ins and outs of pet ownership to better understand what pets need to thrive in their environment.

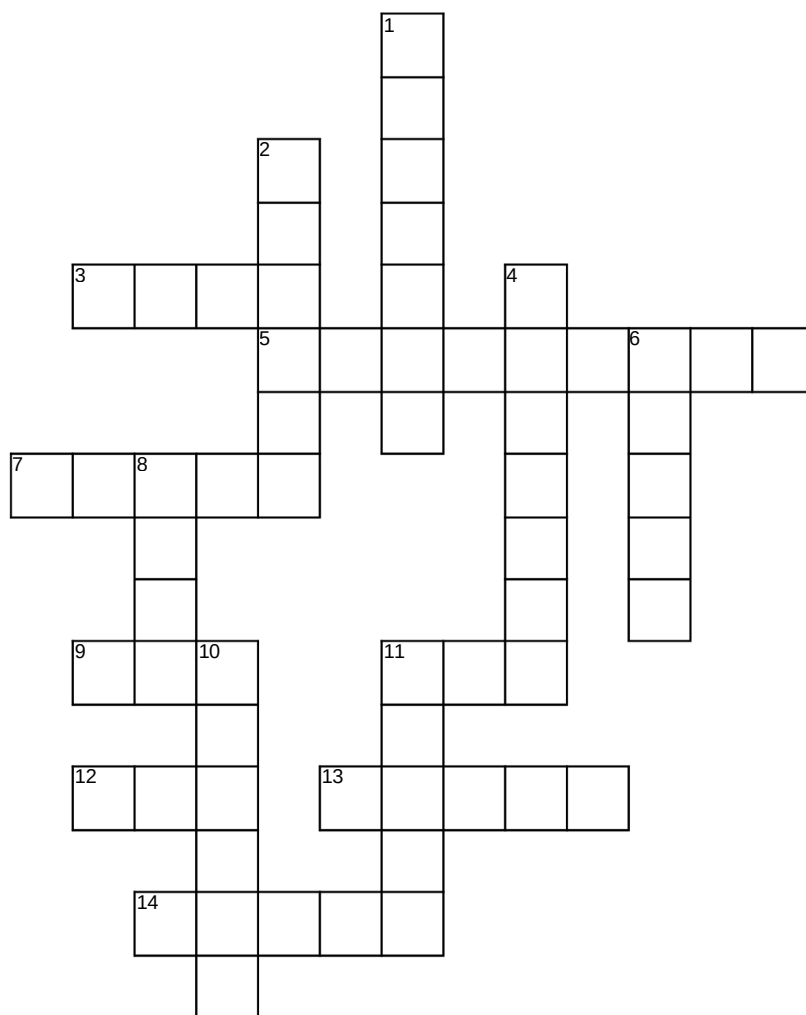
Each program has a fee of \$50.

2. Book a behind-the-scenes tour at a Connecticut Humane Society location of your choosing: Newington, Waterford or Wilton. Tours run Monday-Friday between 11am-4pm. Tours can accommodate up to 15 people. If your group has more members please contact Outreach@cthumane.org.

A tour is available for a \$50 fee.



Pet Care Crossword



Across

3. Hamsters can roll around in this for exercise.
5. Cats need to be trained to go to the bathroom in a _____.
7. Cats and dogs need fresh _____ each day.
9. Always _____ before petting a new dog
11. Dogs and cats should have their own _____ to sleep on.
12. Never leave your pets alone in the car on a _____ day.
13. A young dog.
14. Always walk your dog on a _____.

Down

1. Rabbits love to snack on this orange vegetable.
2. Dogs and cats should wear a _____ with ID tags.
4. Cats and dogs need to eat _____ every day.
6. Another name for a rabbit.
8. Pets should have plenty of _____ to play with.
10. A young cat.
11. You should do this to your pets fur every day.

Pet Behavior Activity

Directions: Describe how each pet is feeling. What is the dog or cat doing to show you that? For example, how do their ears look? Where is their tail? Would you approach & pet them?







Pet Behavior Activity









Pet Interaction Activity- Leader Guide

Instructions: This is a leader led activity that will take about 45 minutes. At the end of this activity the participants should understand how to properly approach and pet a dog. They will also know how to determine if a dog wants to be pet based their body language.

Materials Needed:

- Meeting room large enough for break out groups and performance skits.
- Toy plush dogs (optional) with leash and collar (also optional)



Part One:

Have the children break into pairs, one will role play as the dog owner (walking their imaginary or plush dog) and the other will be the person who would like to pet the dog. You can have them decide amongst themselves who plays which role or you can assign the roles. ***Note larger groups may break into groups of four, two being the owners and two being those who want to pet the dog.**

Instruct the groups to perform a skit with each other. Those who want to pet the dog, will act out how they would safely approach the dog and the owner(s). Allow them to act out this meeting however they want. They may switch roles so each person has a turn to pet the dog and be the owner.

Part Two:

After the skits have been performed have a discussion with the group about what they did and how they acted when meeting the dog. Have one or two groups present their skit.

Then, ask some follow up questions: Below are some examples of the questions you can ask.

Those who wanted to pet the dog

- Did you ask the owner any questions?
- What questions did you ask?

CThumane.org



Pet Interaction Activity- Leader Guide



If you didn't ask questions what do you think you should have asked and why?

- Some examples of questions they should have asked are: Is your dog friendly? May I pet your dog?

Then ask the group: What are the two questions you need to ask the owner before petting their dog?

1. Is your dog friendly?
2. May I pet your dog?

Ask the troop: There is one final step to take before petting the dog, what do you think it could be? **Answer: They need to ask the dog if he or she would like to be pet.**

Part Three:

After introducing the idea that they should also ask the dog if he or she wants to be pet, ask the group if they know how to tell if a dog wants to be pet.

Some good answers: Wagging tail (explain that a slow wag is a nervous dog but a happy fast wag is good), approaching you/rubbing on you, acting excited, etc.

Then ask how they would know if the dog didn't want to be pet?

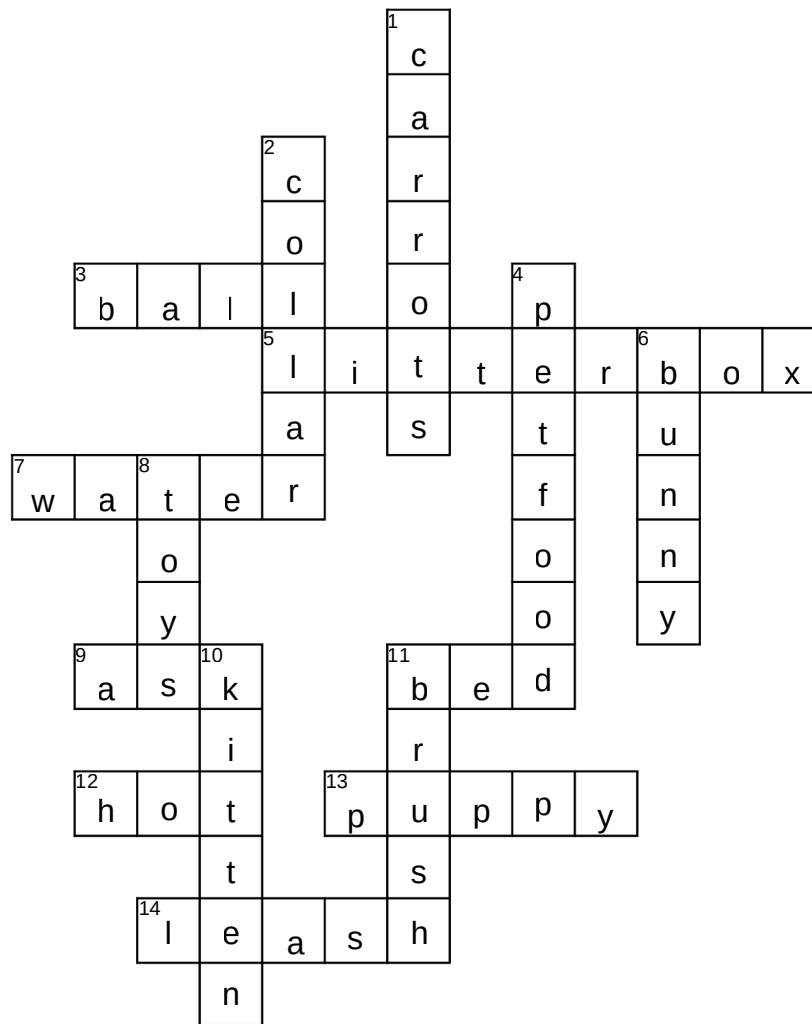
Some good answers: Showing teeth, growling, backing away, barking, snapping/trying to bite, tail tucked between legs, slow wagging tail, showing the white of their eyes.

Wrap-up:

Ask the scouts what they learned about approaching a new dog and how they would change their skits from the beginning of the activity.



Pet Care Crossword



Across

3. Hamsters can roll around in this for exercise.
5. Cats need to be trained to go to the bathroom in a _____.
7. Cats and dogs need fresh _____ each day.
9. Always _____ before petting a new dog
11. Dogs and cats should have their own _____ to sleep on.
12. Never leave your pets alone in the car on a _____ day.
13. A young dog.
14. Always walk your dog on a _____.

Down

1. Rabbits love to snack on this orange vegetable.
2. Dogs and cats should wear a _____ with ID tags.
4. Cats and dogs need to eat _____ every day.
6. Another name for a rabbit.
8. Pets should have plenty of _____ to play with.
10. A young cat.
11. You should do this to your pets fur every day.

Pet Behavior Activity

Directions: Describe how each pet is feeling. What is the dog or cat doing to show you that? For example, how do their ears look? Where is their tail? Would you approach & pet them?

Answer Key



This dog is friendly and wants you to rub his belly. He is feeling playful. His mouth is closed, but relaxed. You can pet this dog.



This dog is anxious and nervous. He has his ears pinned back and his tail tucked between his legs, these are both signs that he is nervous. You can also see the white of his eyes, this is called “whale eye”. When you can see the white of a dog’s eyes it is a sign that the dog is anxious. You should give this dog space and not try to pet him.



This dog is angry. Her lips are tight and pulled back. You can see her teeth and gums. This is a sign of anger. She is lunging forward to scare away what is in front of her. This dog will likely bite you if you try to pet her. Do not approach this dog.

Pet Behavior Activity

Answer Key



This cat is nervous and scared. She is hiding behind the towel to feel safe. Her eyes are wide and she is staring at what is in front of her. You should not pet this cat because she may hiss at you, bite or scratch you.



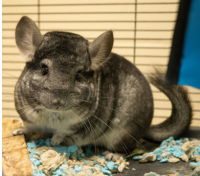
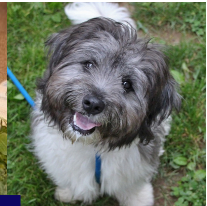
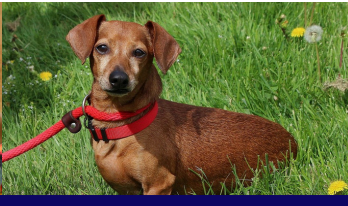
This cat is asleep. It is hard to tell how he feels about you petting him because he doesn't know you are there. It is best not to pet a cat (or dog) when they are sleeping. You do not want to scare them; you may get bitten or scratched.



This cat is angry and scared. His ears are pinned back; this is a sign he is upset. He is crouching backward away from you, another sign he is uncomfortable. His eyes are big and you can see the white of his eyes, this is his way of showing fear. Do not try to pet this cat.



This cat is curious. You know this because her head is tilted to the side. The question mark shape of her tail is a telling sign that she is interested in you. You can slowly approach and pet her as long as she remains interested and friendly.



The Connecticut Humane Society is the leading resource in the state for companion animal welfare, enriching the lives of families and communities through adoption services, medical care, education, and prevention of cruelty.

Newington • Waterford • Wilton

1-800-452-0114 • CThumane.org

