



CHS Patch Program

Animal Advocates



CThumane.org





Dear Girl Scout and Boy Scout leaders,

Thank you for your interest in the Connecticut Humane Society's Patch Program! Guided by our mission to prevent animal cruelty, CHS is proud to partner with you to inspire empathy, responsibility, and compassion in the next generation; empowering the children we serve to grow into kind, conscientious stewards of both pets and their communities. This program offers three different patch opportunities for youth in grades K-12. There are three components to each patch: *Discovery*, *Service for Pets*, and *Connecting with the Connecticut Humane Society*. Most of the activities can be completed at your group meetings. To complete the *Connecting with the Connecticut Humane Society* component please contact our Community Outreach Team at Outreach@cthumane.org. After the program or tour, you will be able to purchase the Animal Advocates patch for each member of your group. In this packet you will find a detailed description of the patch requirements. Please read through the packet; if you have any questions about the process do not hesitate to contact us at the email above. Thank you again for your interest in the Patch Program for Girl Scouts and Boy Scouts! We look forward to working with you.

Sincerely,

Ashley Holm, Hannah Mirlis, and Zoe Picanso

Connecticut Humane Society Community Outreach Team

CThumane.org



Animal Advocates Description

Each member who would like to achieve this patch should complete and participate in all of the activities outlined below. This program operates on good faith. This means we do not require proof that each member has completed their requirements, instead we trust that leaders will do so.

Recommended Grade Level: 5th – 12th Grade

Fees: Leaders will select either a tour or interactive program for their group.

- An interactive program for up to 30 children is \$50.
- A tour for up to 15 people is \$50 per group.
- Patches- \$5 each (available for optional purchase)

Patch Design:



CThumane.org





1. Complete the “Animal Care” word search and use the word bank to fill in the sentences about animal care.
2. How much does a dog cost to own? Talk with pet owners, veterinarians and local pet supply stores to complete the “Cost of a Pet” activity.
3. Discover how pets communicate with people and each other by completing the “Pet Behavior” activity.
4. What is animal welfare and why is it important? Research at least two different careers connected to animal welfare and write a short description of each. Present the careers you found at your next meeting.

Service for Pets

As a group please participate in a service activity for the pets at the Connecticut Humane Society. All donations may be dropped off at the Newington, Waterford or Wilton location. Wish lists can be found at CThumane.org/wishlist. Below are a few suggestions to help get your group started.

- Organize a pet food drive for the Connecticut Humane Society Pet Food Pantry.
- Design an online collection drive using the CHS Amazon Wish list.
- Craft approved hand-made items for the pets. A list of safe DIY crafts can be located here: CThumane.org/craft.



Connecting with the Connecticut Humane Society

Once you have completed all of the other requirements, there are two options for completing the patch (*please choose one*):

1. Schedule a time for a Connecticut Humane Society educator to visit and lead an interactive program for your group. Programs run Monday-Friday between 7am-7pm. These programs are capped at 30 participants, if your group has more members please contact Outreach@cthumane.org.

Program Options:

- Pet Professions: Learn about the many different careers related to pets, especially those at animal welfare organizations.
- Beyond the Breed: Exploring Dog DNA: Test your knowledge of different dog breeds and learn how genetics contribute to pet health.
- Pet Care 101: Learn the ins and outs of pet ownership to better understand what pets need to thrive in their environment.
- All About CHS: Learn the Connecticut Humane Society's life-changing work with pets and the people who love them.
- Boredom Busters: Explore tips and tricks for preventing boredom in dogs, cats and small pets.

Each program has a fee of \$50.

2. Book a behind-the-scenes tour at a Connecticut Humane Society location of your choosing: Newington, Waterford or Wilton. Tours run Monday-Friday between 11am-4pm. Tours can accommodate up to 15 people. If your group has more members please contact Outreach@cthumane.org.

A tour is available for a \$50 fee.

CThumane.org



Animal Care

Use the word bank to complete the sentences.
Then find all of the words in the word search.

A M Q A V T K K I B Y F U C J O B W L Q
X D F I D R F N W W R O P V M B E O D I
U I O N R A T E O W A Q I H T L R Z J X
Z W Y P N I S Y X G L O P H D T I U E Z
V P W L T N W V S E V I W E N L Y Z J Y
I M V P S I U Z M D R G C O G Q O R Y C
T S H A U N O L B W N C C E T J Q H W B
D F B O C G N N E B V L I E N E Z J U N
F G C O U C S F G X A S M S W S P A W Y
K W L Y H L I P K M N P A J E T E O F C
G A I H Y A F N I E T A P F O C K E O M
M L H K Q S T N E E N Y Z K J R C I V Z
A I P Z G S A W U S Q O Z Z E S H D D F
D X C S R Z L P H S B R J L D V Z Y C F
F Q K R O V E T E R I N A R I A N U X K
P L J Q O A N R A B I E S F B G T V Y J
J J H B M C E E U S I U F Z W A D M H K
A C A N E P H L A Y J T C P Y M L Y Y U
V W M R R M W I U P J E D D O F R M C H
R Z B E R A A X P P E R M I S S I O N E

ADOPTION
VETERINARIAN
TRAINING CLASS
PERMISSION

MICROCHIP
SPAY OR NEUTER
GROOMER
LICENSE

VACCINES
ANIMAL CONTROL
EXERCISE
RABIES

CThumane.org



Instructions: Use the word bank under the word search to complete the following sentences. Each word will only be used once.

1. Keeping your pets up to date on their _____ is important for keeping them healthy.
They should also get yearly wellness check-ups from the _____.
2. After the _____ of a new puppy it is important to enroll them in a
_____ where they will learn basic commands and manners.
3. Before you pet a new dog it is important to ask _____ from the owner.
4. You should always _____ or _____ your pets to help prevent over-population.
5. A _____ is an identification tool used to determine who a pet belongs to if it gets
lost and is found by an _____ officer or brought to an animal
shelter.
6. Every dog must have a _____ with the town.
7. The _____ vaccine is required by law for cats and dogs.
8. Taking your pet to the _____ is a good way to keep their coats clean and free from
mats.
9. Dogs need a lot of _____, taking them for a walk or playing fetch with them are
good ways to provide this.



How Much Does It Really Cost to Get a Dog?



Your family has given you the task of determining how much a new dog will cost. Assume you are adopting a 2-year-old, 50 pound dog from the Connecticut Humane Society and fill in the information below. To find the prices, check online, talk with a local veterinarian or visit a local pet supply store.

One Time Costs

Spay or neuter.....\$ Free*

*The Connecticut Humane Society spays or neuters all pets before they are adopted.

Adoption fee \$ _____

New leash and collar \$ _____

Identification tag \$ _____

Crate \$ _____

Food and water dish \$ _____

Dog bed \$ _____

Pet brush/comb \$ _____

Nail clippers \$ _____

Total Initial Cost \$ _____

Monthly Costs

Dog food \$ _____

Treats & Toys \$ _____

Heartworm preventative \$ _____

Flea and tick medicine \$ _____

Total Monthly Cost \$ _____

Yearly Costs

Annual vet check-up and vaccines \$ _____

Dog license (from your town or county) \$ _____

Total Yearly Cost ([total monthly cost x 12] + yearly costs) \$ _____

Pet Behavior Activity

Directions: Describe how each pet is feeling. What is the dog or cat doing to show you that? For example, how do their ears look? Where is their tail? Would you approach & pet them?







Pet Behavior Activity









Animal Welfare Careers

Directions: Choose two careers related to animal welfare and research details about them. Below, write a short description of each to share with your troop or den. Include a picture of someone in that career field in the frame.

Career #1

Title: _____

Salary: \$ _____

Description: _____



Career #2

Title: _____

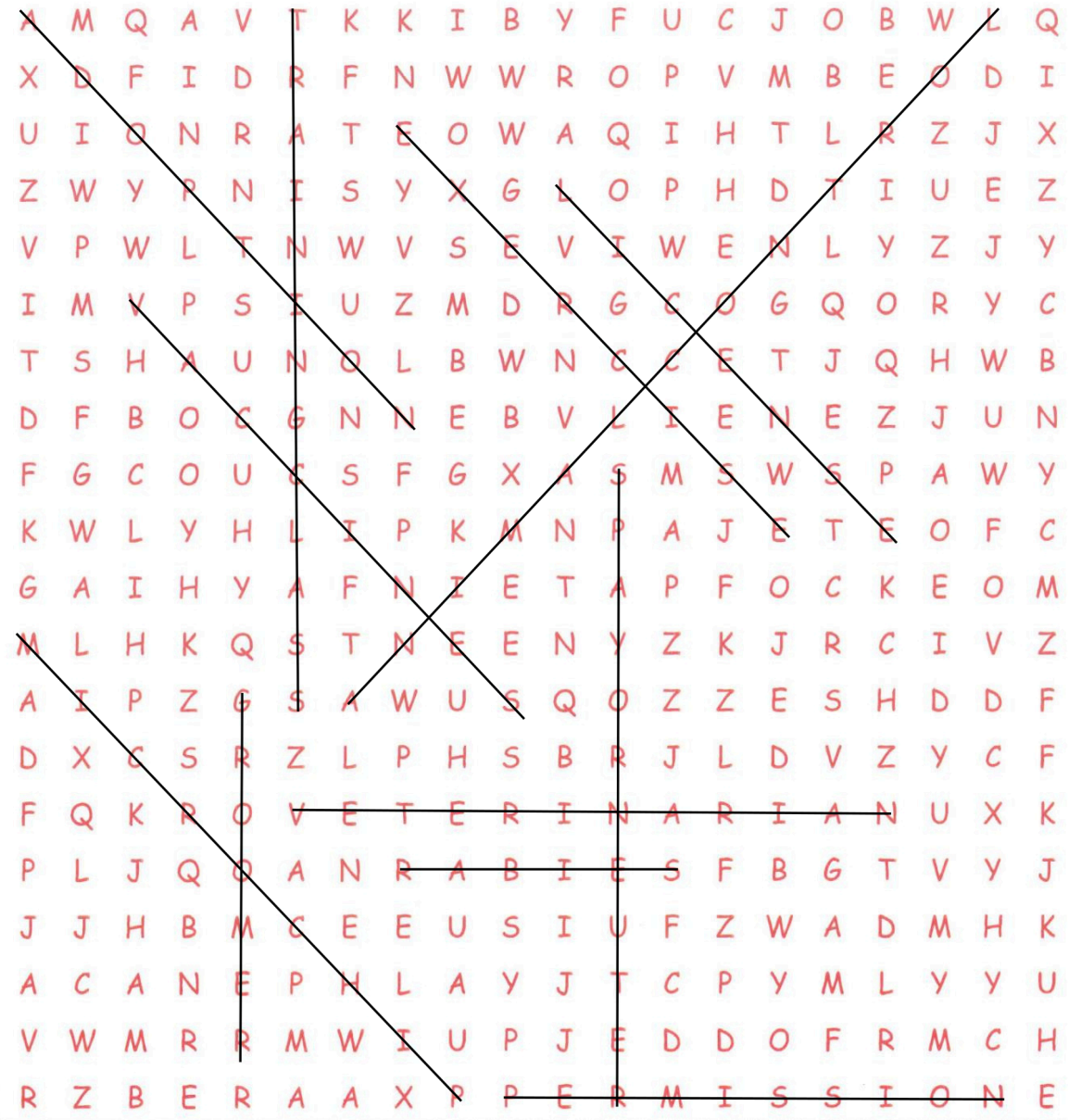
Salary: \$ _____

Description: _____



Animal Care

Use the word bank to complete the sentences.
Then find all of the words in the word search.



ADOPTION
VETERINARIAN
TRAINING CLASS
PERMISSION

MICROCHIP
SPAY OR NEUTER
GROOMER
LICENSE

VACCINES
ANIMAL CONTROL
EXERCISE
RABIES

CThumane.org



Instructions: Use the word bank under the word search to complete the following sentences. Each word will only be used once.

1. Keeping your pets up to date on their vaccines is important for keeping them healthy.
They should also get yearly wellness check-ups from the veterinarian.
2. After the adoption of a new puppy it is important to enroll them in a training class where they will learn basic commands and manners.
3. Before you pet a new dog it is important to ask permission from the owner.
4. You should always spay or neuter your pets to help prevent over-population.
5. A microchip is an identification tool used to determine who a pet belongs to if it gets lost and is found by an animal control officer or brought to an animal shelter.
6. Every dog must have a license with the town.
7. The rabies vaccine is required by law for cats and dogs.
8. Taking your pet to the groomer is a good way to keep their coats clean and free from mats.
9. Dogs need a lot of exercise, taking them for a walk or playing fetch with them are good ways to provide this.



Pet Behavior Activity

Directions: Describe how each pet is feeling. What is the dog or cat doing to show you that? For example, how do their ears look? Where is their tail? Would you approach & pet them?

Answer Key



This dog is friendly and wants you to rub his belly. He is feeling playful. His mouth is closed, but relaxed. You can pet this dog.



This dog is anxious and nervous. He has his ears pinned back and his tail tucked between his legs, these are both signs that he is nervous. You can also see the white of his eyes, this is called “whale eye”. When you can see the white of a dog’s eyes it is a sign that the dog is anxious. You should give this dog space and not try to pet him.



This dog is angry. Her lips are tight and pulled back. You can see her teeth and gums. This is a sign of anger. She is lunging forward to scare away what is in front of her. This dog will likely bite you if you try to pet her. Do not approach this dog.

Pet Behavior Activity

Answer Key



This cat is nervous and scared. She is hiding behind the towel to feel safe. Her eyes are wide and she is staring at what is in front of her. You should not pet this cat because she may hiss at you, bite or scratch you.



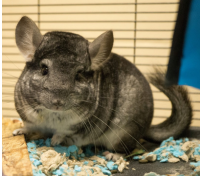
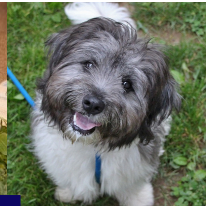
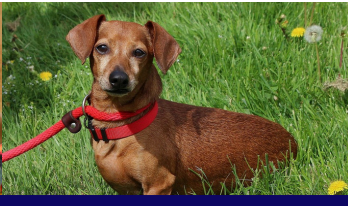
This cat is asleep. It is hard to tell how he feels about you petting him because he doesn't know you are there. It is best not to pet a cat (or dog) when they are sleeping. You do not want to scare them; you may get bitten or scratched.



This cat is angry and scared. His ears are pinned back; this is a sign he is upset. He is crouching backward away from you, another sign he is uncomfortable. His eyes are big and you can see the white of his eyes, this is his way of showing fear. Do not try to pet this cat.



This cat is curious. You know this because her head is tilted to the side. The question mark shape of her tail is a telling sign that she is interested in you. You can slowly approach and pet her as long as she remains interested and friendly.



The Connecticut Humane Society is the leading resource in the state for companion animal welfare, enriching the lives of families and communities through adoption services, medical care, education, and prevention of cruelty.

Newington • Waterford • Wilton

1-800-452-0114 • CThumane.org

