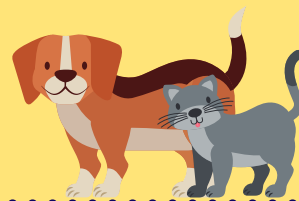








# Dog and Cat NO-SEW BEDS



## SUPPLIES NEEDED



-  Fleece fabric
-  Sharp scissors
-  Yard stick or ruler
-  Poly-fil stuffing or foam padding\*

\*Please do not stuff beds that will be donated to a shelter

### How Much Fleece?

**Small dog = 2 yards**  
**Medium dog = 3 yards**  
**Large dog = 4 yards**  
**Cat = 4 feet**

## Dog Bed Instructions

1. Take the piece of fleece and cut it in half. You should have two identical pieces.
2. Lay one piece on top of the other.
3. Cut off the corners. The pieces you remove should be five-inch-by-five-inch squares.
4. Cut five-inch-long strips that are one-inch wide along the entire border. Be sure to cut through both pieces of fabric at the same time.
5. Take a strip from the top piece of fabric and tie it to the corresponding strip on the bottom piece. Repeat this step a second time. Each tie should be a double knot. If you plan on filling the bed with stuffing leave one side untied.



6. Fill the blanket with stuffing or foam. Remember to skip this step if you are donating the bed to a shelter.
7. Tie the final side the same way you did in step five.

## Cat Bed Instructions

1. Take the piece of fleece and cut it in half. You should have two identical pieces.
2. Lay one piece on top of the other.
3. Cut one-inch-wide strips about three inches deep into the fleece. Cut along the entire border. Be sure to cut through both pieces of fabric at the same time.
4. Follow steps 5-7 above to complete your cat bed.

