



WELCOME

Paw through another edition of CHS' Kids News. In this issue you will learn who founded CHS', how to create a fun treat for your cat and tips about starting a career in animal behavior.

Are you looking to help pets this summer? Sign up to host a Virtual Lemonade Stand! All the money that you raise will go to healing pets in need. If you raise \$50, you get a free lemonade t-shirt. Visit: CThumane.org/lemonade



Do you enjoy reading stories about pets? Join CHS this summer for Paws and Pages, a virtual storytime. The first meeting will be Tuesday, June 1.



Ask an adult to help you register for Paws and Pages.
Sign up here:
CThumane.org/pawsandpages

STAFF SPOTLIGHT

Behavior Coordinator EVELIA RIVERA



Evelia is the Behavior Coordinator at CHS Westport. She works with different types of pets and helps prepare them for their new families. Enrichment (activities to exercise a pet's brain and body) is one of Evelia's favorite parts of her job. "I love creating new enrichment for animals. Figuring out new ways to keep them mentally stimulated

is such an important part of my job, and it's lots of fun!" If you are interested in a career involving animal behavior, Evelia has some tips for you. "Begin training your family pets from dogs and cats, to rabbits! There are so many resources online to help with this." Evelia suggests taking animal-related classes in school whenever you can. If your school doesn't offer pet-specific classes, "studying science or psychology will definitely help," Evelia adds.



KIDS IN THE NEWS

The Connecticut Humane Society was founded in 1881 by Gertrude O. Lewis, who at the time was a high school senior in Hartford, Connecticut. Gertrude had a vision and desire to help people and animals. She took action at a young age to make a difference. Her initiative brought positive change to the lives of children, livestock, wildlife, working animals, veterans and senior citizens. In 1965, CHS' mission shifted and companion animals became the primary focus. Companion animals are pets whose needs are met through human interaction. Today, CHS is the oldest and largest welfare organization in Connecticut with three locations throughout the state: Newington, Waterford and Westport.

Help us find our next Kid in the News. Email us at: Outreach@CThumane.org

VOCAB WORDS

Directions: Look up the following words.

ADOPTION

COMPANION ANIMAL

ANIMAL WELFARE



SNACK SAFETY



Summer snacks can be a delicious treat for us and our pets! But some summer treats like ice cream, grapes and corn on the cob can be dangerous for pets. Frozen treats like watermelon, blueberries, and small amounts of plain yogurt can be a great way to give your pup a refreshing summer treat they can safely enjoy. Always do your research to make sure any new treats are safe for your pet and always check with your veterinarian.

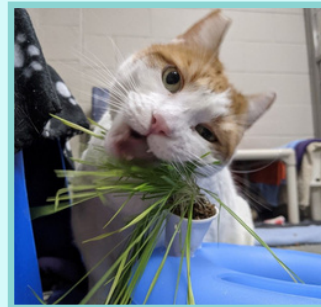
For more foods that are safe for your pets visit:
CThumane.org/foodsafety



DIY CAT GRASS

Grass is a fun and tasty treat for many cats. Planting a pot of cat grass is a great way to bring the outdoors in and add something new and exciting into your pet's environment. Cat grass is a mixture of different seeds like wheat, oat and rye. The seeds grow into grasses that are safe for your cat to eat.

Grass that grows outside can have pesticides that are harmful to pets. Growing your own inside is a great way to keep your cat safe and entertained. To get started, ask an adult for help in gathering up all the supplies from the video below.



Cat Grass How-To Video:
CThumane.org/catgrass



Share a photo of your
 cat enjoying their grass!
Outreach@CThumane.org



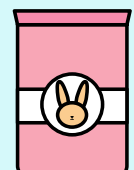
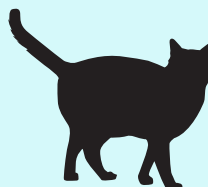
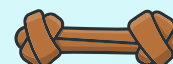
TRIVIA



What is the term used to describe a happy bunny's jumps and twists in the air?

ACTIVITY

Directions: Match the pet with the item they need to be happy and healthy.



Answer: Binky

